

Figure 14
Motor and Gear
Reducer Exploded View

Motor And Peerless-Winsmith Type Gear Reducer Parts List

Key No.	No. Req'd	Part Name	Part Number
635-89	4	Gear Reducer Mtg. Screw	927764
635-90	4	Gear Reducer Screw L.W.	982226
635-91	1	Pinion Washer	982263
635-92	1	Pinion	35429
635-93	2	Pinion Key	85546
635-94	1	Pinion Retaining Ring	82680
635-95	1	Motor Cable Assembly	36500 For Single Phase Units, 51440 For Three Phase Units
635-96	1	Motor Cable Connector	83969 For Single Phase Units, 83968 For Three Phase Units
635-97	1	Connector Locknut	989771
635-288	1	Motor-Complete (Individual Components Not Available For Repairs).	36925 For 115-1-60 Motor 36924 For 230/460-3-60 And 220/380-3-50 Motor 36923 For 575-3-60 Motor
635-289	1	Gear Reducer-Complete	36204 (10:1) For 75 F.P.M. Trolleys 36205 (25:1) For 30 F.P.M. Trolleys
635-290	1	Motor Shaft Key	85554
635-291	4 Ea.	Motor Attaching Screw And Lockwasher	987005 (Screw), 987919 (Lockwasher)
635-400	1	Housing	
635-401	1	Ball Bearing	
635-402	2	Cone, Roller Bearing	
635-403	2	Cup, Roller Bearing	
635-404	1	Temper Load Ring	
635-405	1	Truarc Spacer	
635-406	1	Retaining Ring	
635-407	1	Retaining Ring	
635-408	1	High Speed Cap Closed	
635-409	2	Gasket High Speed Cap	
635-410	1	Gasket Slow Speed Cover	
635-411	1	$\frac{3}{16} \times \frac{3}{16} \times 1$ inch Long Square Key	
635-412	1	$\frac{1}{8} \times .375$ Hex CTSK PP/Vent	
635-413	5	$\frac{1}{4} \times .375$ Hex CTSK PP Steel	
635-414	1	$\frac{1}{4} \times \frac{1}{2}$ Brass Escutcheon Pins	
635-415	1	Slow Speed Cover & Base	
635-416	1	Slow Speed Shaft	
635-417	1	Slow Speed Plug Cover & Housing	
635-418	4	$\frac{3}{16}$ - 18x $\frac{7}{8}$ Hex Head Cap Screw	
635-419	4	$\frac{3}{16}$ Stand Non Link Lockwasher	
635-420	4	$\frac{1}{4}$ - 20x $\frac{3}{4}$ Sems Hex Head Cap Screw	
635-421	4	$\frac{1}{4}$ Non Link LW	
635-422	2	Oil Seal	
635-423	1	Oil Seal	
635-424	1	Motor Adapter	
635-425	4	$\frac{1}{4}$ - 20x1- $\frac{1}{4}$ Hex Head Cap Screw	
635-426	4	$\frac{1}{4}$ Non Link LW	
635-427	1	Worm On Shaft	
635-428	1	Gear	
635-429	4	$\frac{3}{8}$ Standard Non Link Lockwasher	
635-430	4	$\frac{3}{8}$ - 16x $\frac{7}{8}$ Hex Head Cap Screws	

CONTACT CM
FOR PART
NUMBER OF
GEAR
REDUCER
COMPONENTS
KEY NUMBERS
635-400 Thru 635-430

Motor Brake Parts List

Key No.	No. Req'd	Part Name	Part Number
635-206	1	Brake Cord	51074
635-260	1	Coupler Brake Shaft Kit (includes Shaft, Bearing, Snap Ring, Retainer Ring and Key)	<p>Contact CM For Part Numbers Of Brake Components Key Numbers 635-260 Thru 635-286, 635-294 And 635-353</p>
635-261	1	Housing	
635-262	4	Mounting Stud With Nut	
635-263	2	Access Cover - Plain	
635-264	—	Access Cover Screw (Specify No. Req'd.)	
635-265	2	* Access Cover Gasket	
635-266	1	* Drain Plug	
635-267	1	* Housing To End Plate Gasket	
635-268	2	* Gasket - Each End Of Brake	
635-269	1	Stationary Disc	
635-270	1	Friction Disc Kit (Includes 3 Discs With Stabilizer Spring - Only One Disc Required Per Brake)	
635-271	1	Hub Kit (Includes Hub And Set Screws)	
635-272	1	End Plate Assembly	
635-273	1	Plug—External Lead Hole	
635-274	1	Bearing	
635-275	1	Solenoid Lever	
635-276	1	Retaining Ring	
635-277	2	Spacer	
635-278	2	Torque Adjusting Screw	
635-279	2	Wear Adjusting Screw	
635-280	2	Pressure Spring	
635-281	1	Lever Arm And Stop Nut Assembly	
635-282	1	Bearing Pin	
635-283	1	Support Plate And Stop Nut Assembly	
635-284	1	Pivot Pin	
635-285	1	Solenoid Kit (Includes Plunger, Link, Frame Link Screw, Link Nut And Mounting Screws)	
635-286	1	Coil Kit (Includes Coil, Plunger Guides, Guide Screw and Lockwasher)	
635-287	1	Motor Brake Kit (Includes Complete Brake Assembly, Brake Cord, Connector Wire Nuts and Installation Instructions)	9597 For 115 Volt Brake, 9598 For 220, 230, 380 And 460 Volt Brake
635-292	1	Brake Cord Connector	83968
635-293	4	Wire Nut	982473
635-294	3	Brake Attaching Screw	Contact CM
635-353	1	** Access Cover With Manual Release Knob	Contact CM

* For Weatherproof Units - Not Shown

** Not Shown

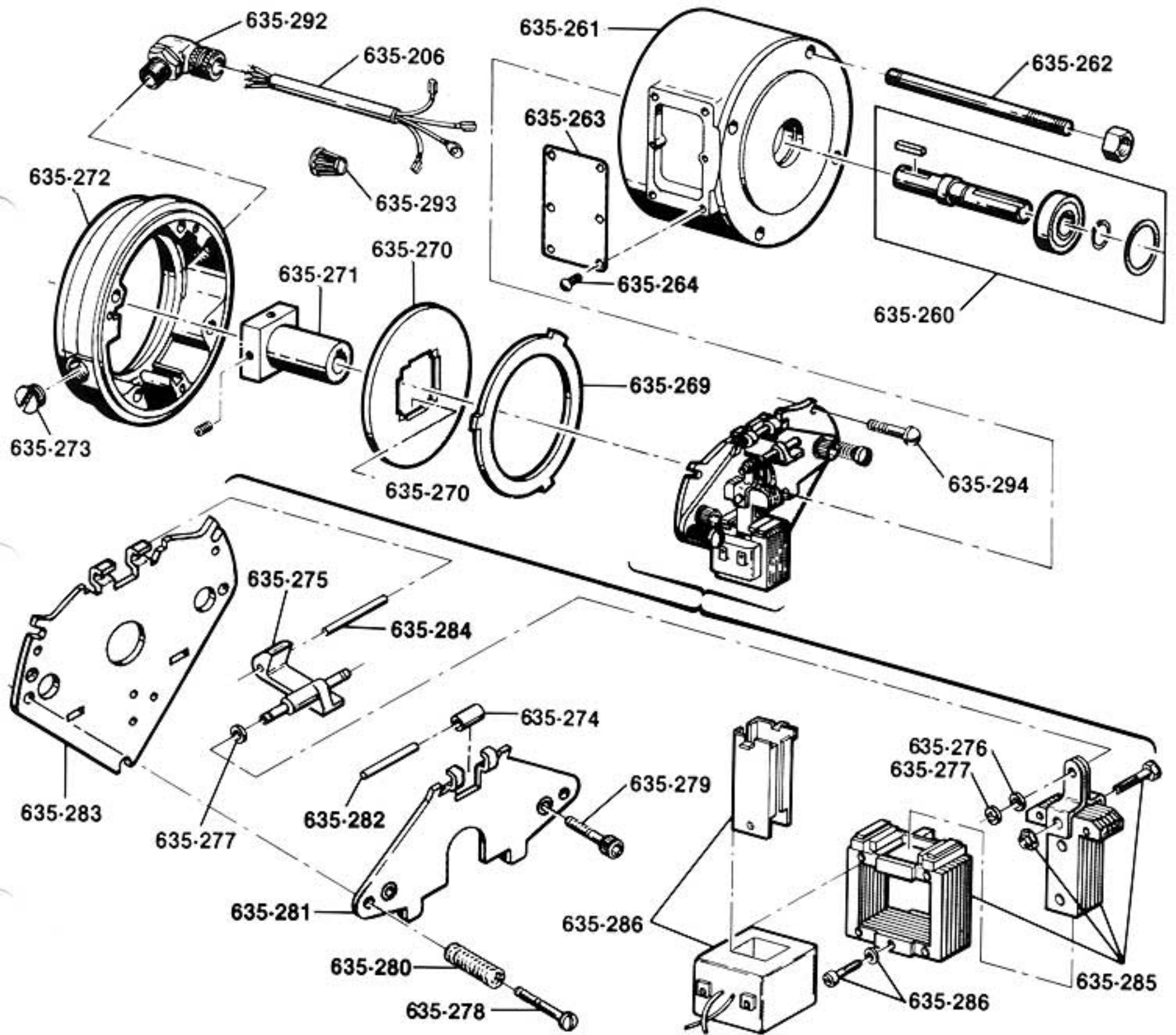


Figure 15
Motor Brake Exploded View

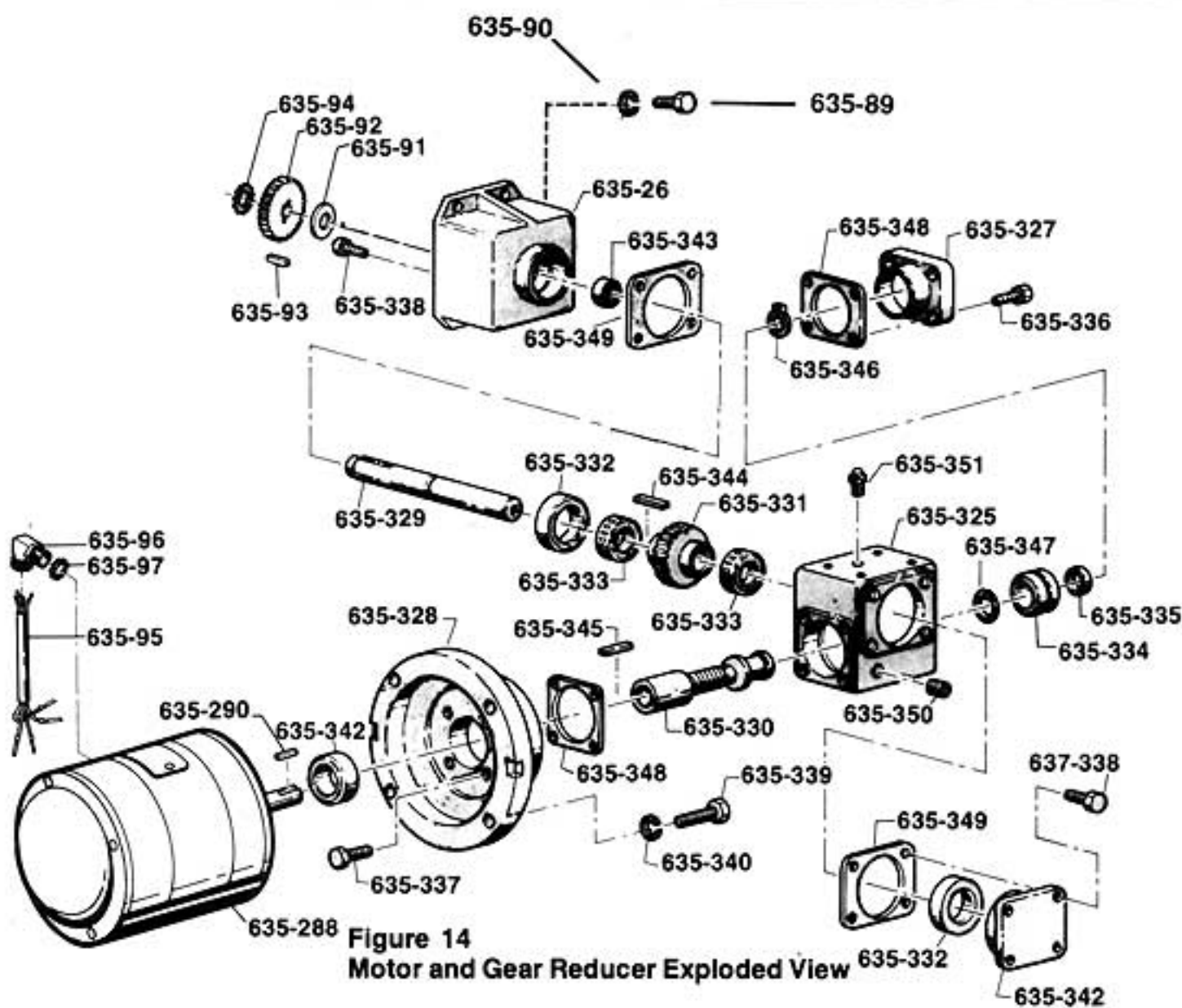


Figure 14
Motor and Gear Reducer Exploded View

Motor And Hub City Type Gear Reducer Parts List

Key No.	No. Req'd	Part Name	Part Number
635-89	4	Gear Reducer Mtg. Screw	927764
635-90	4	Gear Reducer Screw L.W.	982226
635-91	1	Pinion Washer	982263
635-92	1	Pinion	35429
635-93	2	Pinion Key	85546
635-94	1	Pinion Retaining Ring	82680
635-95	1	Motor Cable Assembly	36500 For Single Phase Units, 51440 For Three Phase Units.
635-96	1	Motor Cable Connector	83969 For Single Phase Units, 83968 For Three Phase Units.
635-97	1	Connector Locknut	989771
635-288	1	Motor-Complete (Individual Components Not Available For Repairs).	36925 For 115-1-60 Motor 36924 For 230/460-3-60 And 220/380-3-50 Motor 36926 For 575-3-60 Motor
635-289	1	Gear Reducer-Complete	36204 (10:1) For 75 F.P.M. Trolleys 36205 (25:1) For 30 F.P.M. Trolleys
635-290	1	Motor Shaft Key	85554
635-291	4 Ea.	Motor Attaching Screw And Lockwasher	987005 (Screw), 987919 (Lockwasher)
635-325	1	Housing	<p>CONTACT CM FOR PART NUMBERS OF GEAR REDUCER COMPONENTS KEY NUMBERS 635-325 Thru 635-352</p>
635-326	2	Cap, Output	
635-327	1	Cap, Closed Input	
635-328	1	Flange, Motor	
635-329	1	Shaft, Output	
635-330	1	Worm, Integral	
635-331	1	Gear, Worm	
635-332	2	Cup, Bearing	
635-333	2	Cone, Bearing	
635-334	1	Bearing, Ball	
635-335	1	Washer	
635-336	4	Screw, Hex Cap (1/4 NC x 5/8-GR5)	
635-337	4	Screw, Hex Cap (1/4 NC x 7/8-GR5)	
635-338	8	Screw, Hex Cap (1/4 NC x 1/2-GR5)	
635-339	4	Screw, Hex Cap (3/8 NC x 1-GR5)	
635-340	4	Washer, Locking (3/8)	
635-341	1	Kit, Repair (Includes 635-342 Thru 635-351)	
*635-342	1	Seal, Input Shaft	
*635-343	1	Seal, Output Shaft	
*635-344	1	Key, P&W (7/16 Sq. x 1")	
*635-345	1	Key, P&W (7/16 Sq. x 1 3/8)	
*635-346	1	Ring, Retaining	
*635-347	1	Ring, Retaining	
*635-348	12	Gasket, Input Cap	
*635-349	12	Gasket, Output Cap	
*635-350	4	Plug, Pipe, Socket (1/2 NPT)	
*635-351	1	Plug, Vented	
635-352	1	Cap, Closed	

*These Items Are Only Available In Repair Kit Form. Order "Kit, Repair, Key No. 635-341"

Control Box Components Parts List

Refer To Figure 13

Key No.	No. Req'd.	Part Name	Capacity	
			1/8-2 Ton	3 Ton
			Part Number	
635-82**	1	Bridge Control Cord Connector Locknut	989772	
635-83**	1	Cable Clamp Screw Nut	982514	
635-84**	1	Cable Clamp	27833	
635-85**	1	Cable Clamp Screw Washer	954802	
635-86**	1	Cable Clamp Screw	982688	
635-87	1	Label (For Wiring Diagram)	968996	
635-88	1	Connector Washer	987177 (Used with control box part No. 36801 only)	
635-126†	1	Contactors	28835 For Contactor with 115 V. Coils, 28846 For Contactor With 48 V. Coils, 28837 For Contactor With 24V. Coils	
635-197‡	1	Field Wiring Kit (Units with 2 button control station)	36665	
635-198‡	1	Field Wiring Kit (Units with 4 button control station)	36666	
635-217	3	Ground Screw	958805	
635-218	3	Ground Screw Lockwasher	987873	
635-223	1	Short Hoist Power Cord	51247 For 1 Phase Lodestar, 51246 For 3 Phase Lodestar, 51081 For 1 Phase Techstar, 51082 For 3 Phase Techstar, For Valustar, Contact CM	
635-224	1	Short Hoist Control Cord	51245 For Lodestar, 51080 For Techstar For Valustar, Contact CM	
635-300	—	Line Connector (Specify No. Req'd.)	982158	
635-304	1	Brake Cord Conn. Locknut	989771	
635-305*	1	Brake Cord Conn.'O' Ring	983967	
635-306	1	Brake Cord Connector	89916	

*For weatherproof units only
 **For use with 6 button control stations
 †Individual components not available for repairs
 ‡Not shown

Separate Parts List For Units With Main Line Contactor

Key No.	No. Req'd.	Part Name	Part Number
635-45	1	Transformer	68810 For 230 & 460 Volt Trolleys 68786 For 575 Volt Trolleys
635-38	1	Power Cord	51192 (Single Phase) 51194 (Three Phase)
‡	1	Main Line Contactor	36947 (115 V. Coil)
‡	2	Main Line Contactor Screw	982537
‡	2	Main Line Contactor Screw L.W.	957844
‡	4	Transformer Spacer	68759
‡	4	Transformer Mtg. Screw	959200
‡	4	Transformer Screw L.W.	987873

Control Box Components Parts List

Refer To Figure 13

Key No.	No. Req'd.	Part Name	Capacity	
			1/8-2 Ton	3 Ton
			Part Number	
635-26	1	Control Box & Brackets w/ Cover & Cover Mounting Screws	36801 For Units Without Main Line Contactor 36248 For Units With Main Line Contactor	
635-29	4	Control Box Mounting Screw	982693	
635-30	1	C.M. Nameplate	935899	936828
635-31	1	Wiring Diagram	Contact CM	
635-32	2	Current Label	935884 (115-1-60), 935885 (230-3-60), 935886 (460-3-60), 935887 (220-3-50) 935888 (380-3-50), 935889 (Blank)	
635-33	1	Strain Relief Screw	982695	
635-34	2	Strain Relief Screw Washer	954802	
635-35	1	Cable Clamp	27833	
635-36	1	Cable Clamp Screw Washer	954802	
635-37	1	Cable Clamp Screw	982688	
635-38	1	Power Cord (specify length)	51436 (Single Phase), 51434 (Three Phase) - See Separate Listing for Units With Main Line Contactor.	
635-39	1	Power Cord Connector	89926 (Single Phase), 89916 (Three Phase)	
635-40	1	Power Cord Connector Locknut	989771	
635-43	1	Hoist Power Cord Connector	89916	
635-44	1	Hoist Power Cord Connector Locknut	989771	
635-45	1	Transformer (See Separate Listing For Units With Main Line Contactor).	35734 For 230-3-60 and 460-3-60 Trolleys, 36756 For 220-3-50 and 380-3-50 Trolleys, 35807 For 575-3-60 Trolleys, 35810 for 115-1-60 Trolley For Use With 24 Volt Control and 35809 For 230, 220, 380 and 460 Volt Trolleys for use with 24 Volt Control	
635-46	2	Transformer Mounting Screw	982686	
635-47	1	Terminal Board	35880	
635-48	2	Terminal Board Mounting Screw	982684 (Single Phase), 982537 (Three Phase)	
635-49	2	Terminal Board Mounting Screw Nut	988101	
635-50	1	Control Cord Connector	983979 for Control Cords With 8 Conductors 83982 for Control Cords With 10 Conductors	
635-51	1	Control Cord Connector Locknut	989772 for Control Cords With 8 Conductors 989773 for Control Cords With 10 Conductors	
635-52	1	Terminal Insulator	35881	
635-53	2	Contact Mounting Screw	982683	
635-54	—	Jumper	51573 (2 req'd.), 51653 (3 req'd.), 51652 (5 req'd.) - 1 Phase 51653 (1 req'd.), 51533 (2 req'd.), 51652 (5 req'd.), 51573 (1 req'd.) - 3 Phase	
635-55	1	Jumper (Between Coil Terminals)	51694	
635-58	2	Term. Bd. Nut	982484	
635-59	1	Term. Bd. (Motor Cable)	28719	
635-61*	1	Cover Gasket	35941	
635-65	1	Motor Cable Connector	89916	
635-66*	1	Motor Cable Connector "O" Ring	983967	
635-67	1	Motor Cable Conn. Locknut	989771	
635-68*	1	Power Cord Connector "O" Ring	983967 (Weatherproof Units)	
635-69*	1	Hoist Power Cord Connector "O" Ring	983967 (Weatherproof Units)	
635-70*	1	Control Cord Connector "O" Ring	983963 For Control Cord With 8 Conductors 984901 For Control Cord With 10 Conductors	
635-71*	2	Control Box Plug Screw	982686 (Single Phase), 982683 (3 Phase)	
635-72*	1	Gasket Cement	986913	
635-76	1	Hoist Control Cord Connector	89926	
635-77*	1	Hoist Control Cord Connector "O" Ring	983967	
635-78	1	Hoist Control Cord Connector Locknut	989771	
635-79**	1	Bridge Control Cord	89683 (Specify Length Req'd.)	
635-80**	1	Bridge Control Cord Connector	83980	
635-81**	1	Bridge Control Cord Connector "O" Ring	983963 (Weatherproof Units)	

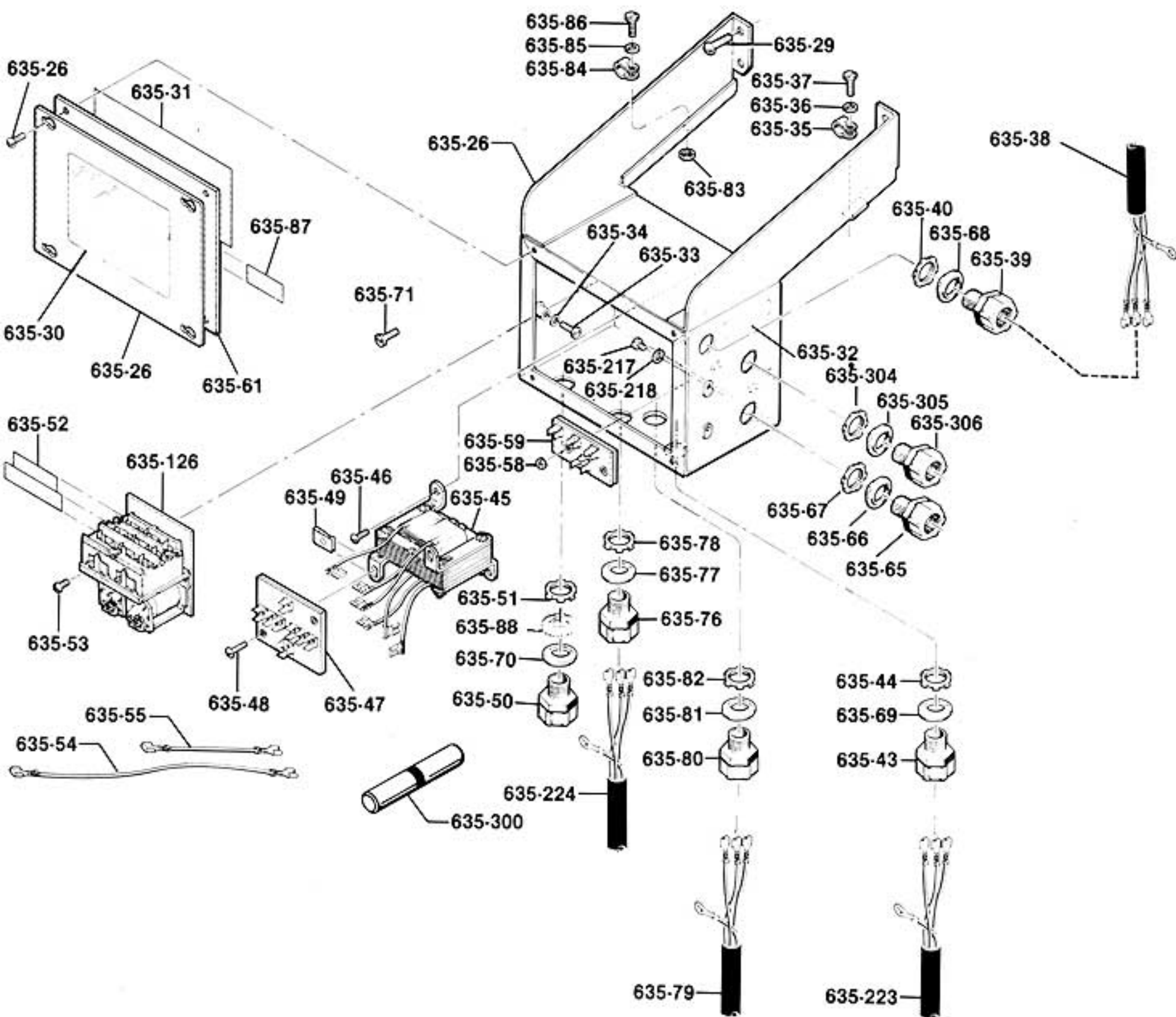


Figure 13
Control Box Exploded View

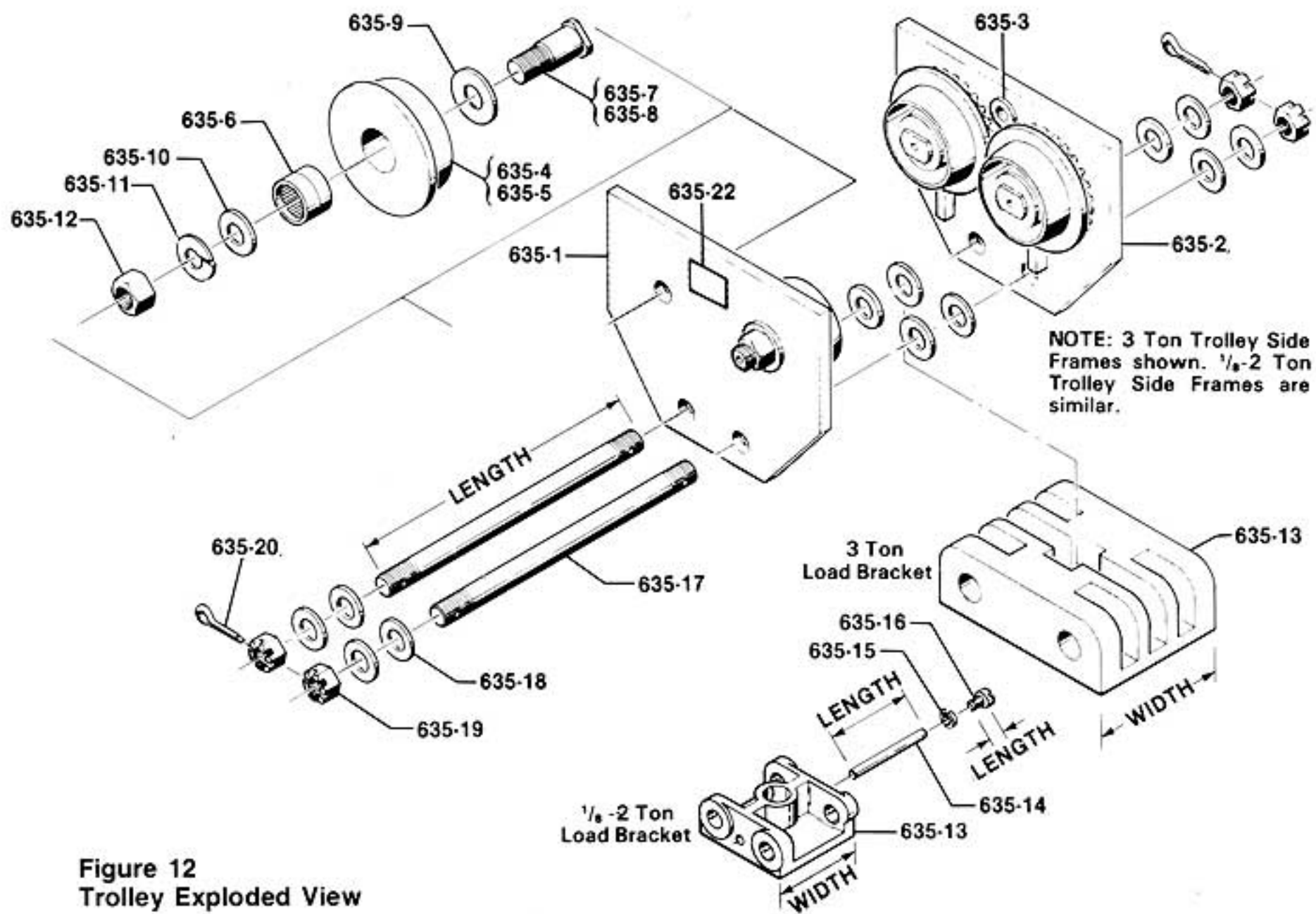
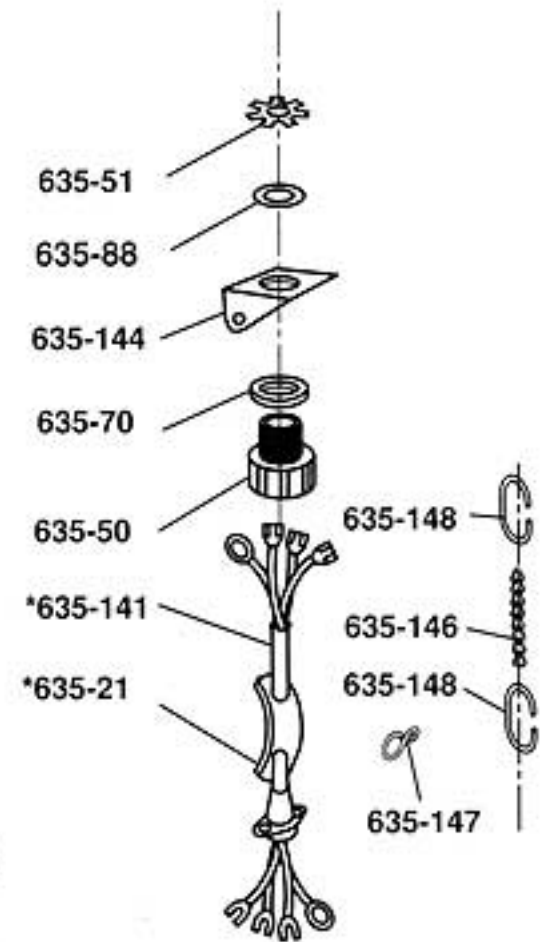
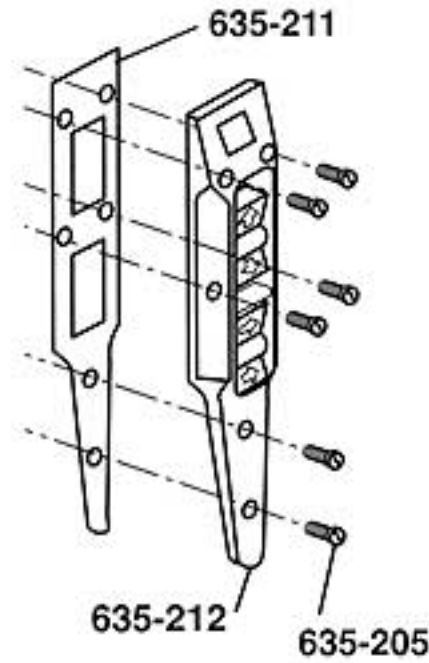
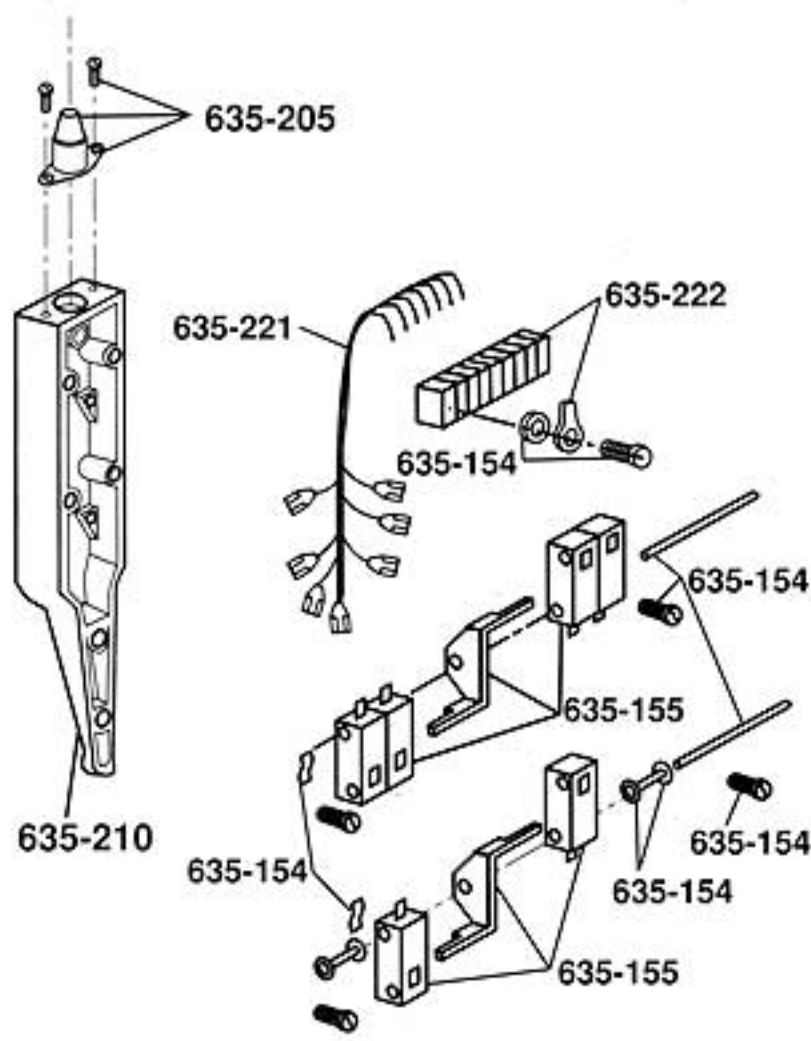


Figure 12
Trolley Exploded View

Trolley Components Parts List

Key No.	No. Req'd.	Part Name	Capacity	
			1/8-2 Ton	3 Ton
			Part Number	
635-1*	1	Side Frame-Plain Side (does not include wheels)	35680	36696
635-2*	1	Side Frame-Gearred Side (does not include wheels)	35690	36697
635-3	1	Motor Shaft Bearing	82055	
635-4	2	Trackwheel, Plain	39002	
635-5	2	Trackwheel With Gear	35642	
635-6	4	Trackwheel Bearing	82113	
635-7	2	Trackwheel Stud-Plain Wheel	36361	
635-8	2	Trackwheel Stud-Gearred Wheel	36362	
635-9	4	Trackwheel Washer—Steel	81014	
635-10	4	Trackwheel Washer—Oilite	82046	
635-11	4	Trackwheel Stud Lockwasher	987926	
635-12	4	Trackwheel Stud Nut	988155	
635-13	1	Load Bracket	35033 (4- ³ / ₁₆ " wide) 35043 (6- ¹ / ₁₆ " wide)	36012 (4- ¹ / ₁₆ " wide) 36021 (6- ¹ / ₁₆ " wide)
635-14	1	Suspension Lug Pin	35413 (2- ⁷ / ₈ " long) 35400 (3- ³ / ₄ " long)	---
635-15	1	Suspension Lug Pin Screw Lockwasher	983547	---
635-16	1	Suspension Lug Pin Screw	982433 (³ / ₄ " long) 987209 (1- ¹ / ₂ " long)	---
635-17	2	Suspension Bolt	35446 (1" dia.x10 ²³ / ₃₂ " lg) 35430 (1" dia.x13 ¹ / ₄ " lg)	36358 (1 ¹ / ₄ dia.x11 ¹³ / ₃₂ " lg) 36380 (1 ¹ / ₄ dia.x12 ²³ / ₃₂ " lg)
635-18	—	Spacer Washer	981012 (42)	936827 (36)
635-19	4	Suspension Bolt Nut	958818	945835
635-20	4	Suspension Bolt Cotter Pin	988368	988382
635-22	1	Warning Label	936984	

* For Trolleys with standard ranges of adjustment and without trolley guards. For all others, contact CM for side frame part numbers.

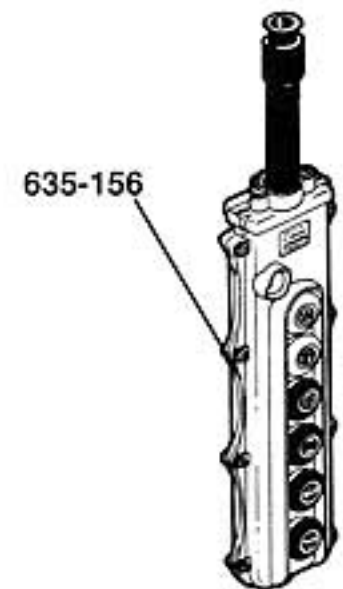


CM 4 Directional Control Station Parts List

Key No.	No. Req'd	Part Name	Part Number
635-21	1	Warning Tag	81704
635-141	1	Control Cord Complete—Specify Length Req'd.—includes Control Cord, Grommet and Grommet Retaining Ring (If Req'd), and Warning Tag.	Contact CM For Part Numbers. (For 8 Conductor Cord With A Length of 16'-3". The Part Number is 36645)
635-144	1	Chain clip at control box: 68704 for control cord with 8 conductors, 57817 for control cord with 10 conductors	-
635-146	-	Control station support chain (Specify length req'd)	621431
635-147	-	Cable clip—specify no. req'd	54749
635-154	1	Control station parts kit consisting of: 1-Strain cable attach. screw 1-Terminal strip spacer 2-Switch mounting pins 4-Pin retainer screws 2-Switch spacers 2-Switch spacer washers 6-Leaf springs	71601
635-155	1	Control station switch kit Consisting of: 6-Switch 2-Interlocks	71602
635-156	1	Control station complete: *CM 4 directional (1 or 2 speed hoist with 1 speed trolley) 6 Button type SBP 5 Button SBP (For other control stations contact CM)	70620 58209 58207
635-205	1	Control station kit consisting of: 1-Grommet 1-Grommet retaining ring 2-Retaining ring screws 6-Cover screws	70507
635-210	1	Case	28874
635-211	1	Gasket	28877
635-212	1	Cover assembly (cover, rockers and decal)	71604
635-221	1	Wiring harness	51546
635-222	1	Terminal strip and mounting lug kit consisting of: 1-Terminal strip 2-Mounting lug	71603

Control Cord, Chain Strain Relief and Related Parts

Note: For key numbers not listed—see pages 16 & 17



Type SBP 5 and 6 Button Control Station—Individual components not available for repair

Multifunction Control Station

*Also order control station kit part number 70507 (635-205)