

## PARTS LIST

Key No.	Part Name	NUMBER REQUIRED		PART NUMBERS				PART NUMBERS		
		Models WB, WE, WF, WH	Models WJ, WL, WR	Model WB	Model WE	Model WF	Model WH	Model WJ	Model WL	Model WR
624-100	Motor Housing	1	1	27028				24008		
624-101	Gear Housing	1	1	28669 (Includes Item 624-102)				35620 (Includes Items 624-102, 624-120, 624-129)		
624-102	Intermediate Gear and Pinion Bearing – Inboard (Includes Shaft Adapter for WJ, WL, WR)	1	1	88440				Order 83670 (Bearing) and 24350 (Shaft Adapter)		
624-103	Chain Guide	2	2	27008				35018		
624-104	Liftwheel	1	1	27360				35421		
624-105	Suspension Adapter Nut	2	2	927755				935791		
624-106	Motor Housing Cover Screw and Lockwasher	2	2	C302				C303		
624-107	Liftwheel Gear Retainer Ring	1	–	27767				–		
624-108	Motor Shaft Bearing, Inboard Retainer Ring	2	2	27790				35764		
624-109	Gear Housing Attaching Screw and Lockwasher	4	4	28830				Order 35733 Screw and 940830 Lockwasher		
624-110	Loose End Screw, Washer & Lockwasher	1	1	C304				C305		
624-111	Motor Shaft Bearing – Outboard	1	1	82009				88437		
624-112	Motor Shaft Bearing – Inboard	1	1	82003				82004		
624-113	Stator Pin	1	–	983541				–		
624-114	Control Cable Screw, Washer and Lockwasher	1	1	C306				C306		
624-115	Back Frame Assembly (Includes brake studs)	1	1	24620 (Includes Items 624-116 thru 624-118, 624-127, 624-128)				24622		
624-116	Drive Shaft and Pinion Bearing	1	1	82009				83691		
624-117	Intermediate Gear and Pinion Bearing – Outboard	1	1	82009				88437		
624-118	Bearing Retainer Screw and washers	1	2	C307				C308		
624-119	Back Frame Attaching Screw and Lockwasher	3	2	982699				Order 987322 Screw and 940830 Lockwasher		
624-120	Liftwheel Bearing – Gear End	1	1	88429				82002		
624-121	Motor Housing Cover	1	1	24504				24759		
624-122	Back Frame Cover	1	1	24757				24758		
624-123	Back Frame Cover Attaching Screw and Lockwasher	2	2	C309				C310		
624-125	Hoist I.D. Label 115-1-60, 230/460	1	1	Contact Factory				Contact Factory		
624-126	Capacity/Warning Label	1	1	24764	24765	24765	24766	24765	24766	24768
624-127	Hole Plug Set	4	1	982454				C311		
624-128	Back Frame Expansion Plug	1	–	940837				–		
624-129	Gear Housing Plug	–	1	–				935767		
624-130	Drive Shaft and Pinion Assembly (Includes items 624-131 thru 624-133 for Models WB, WE, WF, WH, WJ, WL and WR. Also Includes item 624-116 with Models WJ, WL, WR.)	1	1	Order 624-116, 624-131 624-132 and 624-133				24639	24638	24638
624-131	Drive Shaft and Pinion Assembly	1	1	24641 (8T. Pinion, 5-15/64" Long)	24642 (8T. Pinion, 5-43/64" Long)			35357 (18T.)	35356 (12T.)	35356 (12T.)
624-132	Brake Hub	1	1	27851 (8T., 21/32" Long)	27852 (8T., 1-1/8" Long)			–	24019 (13T.)	24019 (13T.)
624-133	Brake Hub Retainer Ring	1	1	27766				35766		
624-134	Liftwheel Gear	1	1	27009 (53T.)				35009 (79T.)		
624-135	Intermediate Pinion	1	1	24351 (8T.)				35351 (10T.)		
624-136	Intermediate Gear Retainer Ring	1	1	27765				35763		
624-137	Protector	1	1	28694	28695			36668	36670	36670
624-138	Liftwheel Bearing – Motor End	1	1	88429				83669		
624-139	Liftwheel Gear Nut & Lockwasher	–	1	–				C312		

## PARTS LIST, continued

Key No.	Part Name	NUMBER REQUIRED		PART NUMBERS				PART NUMBERS		
		Models WB, WE, WF, WH	Models WJ, WL, WR	Model WB	Model WE	Model WF	Model WH	Model WJ	Model WL	Model WR
624-140	Motor End Bell Attaching Screw and Lockwasher 115-1-60 230/460	–	4	–				– C313	C314 C313	C314 C313
624-141	Motor End Bell	–	1	–				24007		
624-142	Loose End Nut	1	1	82638				82639		
624-143	Contacto/Capacitor Bracket with Attaching Screws	–	1	Order (1) Bracket 24200 and (1) Screw 982717				Order Bracket 35701 & (2) Dcrew 983643		
624-144	Motor Shaft Bearing Retainer with Attaching Screws 115-1-60 230/460	–	1	–				C316 C317		
624-145	Capacitor Clamp with Attaching Screws and L.W.	–	1	–				C318 (115-1-60)		
624-146	Motor Shaft Bearing Retaining Nut	–	1	–				935770		
624-147	Contact Block	–	1	–				–	–	36764
624-149	Brake Disc Retainer Ring	–	1	–				24801		
624-151	Lower Hook with Latch (Includes Item 624-152)	1	1	28686	28687	28686	28687	35611	35611	35612
624-152	Latch Kit	1	1	45661	45662	45661	45662	45662	45663	45663
624-156	Load Chain (Specify Length)	1	1	85889 (Specify Length Required)				85979 (Specify Length Required)		
624-157	Lower Hook Assembly – Complete (Items 624-151 and 624-158)	1	1	–	28665	–	28665	–	–	35645
624-158	Lower Hook Collar (or Nut) Pin and Thrust Bearing	1	1	–	C325	–	C325	–	–	C326
624-159	Lower Sheave	1	1	–	27017	–	27017	–	–	35010
624-160	Lower Sheave Bearing	2	2	–	88429	–	88429	–	–	83674
624-161*	Hook Block (*Must order in pairs w 624-162)	2	2	–	27048	–	27048	–	–	35034
624-162*	Hook Block Screws, L.W. and Nuts (3 each) (*Must order in pairs w 624-161)	1	1	–	C327	–	C327	–	–	C347
624-163	Loose End Chain	1	1	85832 (8 Links)				85832 (8 Links)		
624-164	Loose End Block	1	1	24015				24016		
624-165	Loose End Pin and Load Chain Pin	1	1	C328				C348		
624-166	Stop Block	1	1	24785				24786		
624-170	Suspension Adapter	1	1	27703	27013	27703	27013	35740	35740	35741
624-171	Upper Hook with Latch (Includes item 624-152)	1	1	28689	28697	28689	28697	35617	35617	35616
624-172	Upper Hook Collar (or Nut) and Pin	1	1	C329	C330	C329	C330	C331	C331	C332
624-173	Suspension Adapter Screw	2	2	987554				36849		
624-174	Rigid Hook Suspension – Complete	1	1	2788	2789	2788	2789	3651	3651	3658
624-175	Dead End Bolt	1	1	–	89508	–	89508	–	–	35957
624-176	Dead End Block, Pin, Washer and Cotter Pin	1	1	–	C334	–	C334	–	–	C335
624-177	Suspension Lug	1	1	27450	27452	27450	27452	35456	35456	35457
624-178	Lug Suspension – Complete	1	1	2778	2779	2778	2779	3677	3677	3668
624-179	Suspension Adapter Anchor	–	2	–				35066		
624-180	Back Frame Dowel	–	2	–				35768		
624-190	Brake Plate	1	1	24741				24740		
624-191	Brake Friction Plate	2	2	24603				24602		
624-192	Brake Field	1	1	24606				24608		
624-193	Brake Armature	1	1	24607				24609		
624-194	Brake Spring	2	2	24731				24732		
624-195	Brake Nut	2	2	982442				982443		
624-196	Brake Coil Retainer Strap	1	1	24738				24738		
624-197	Brake Disc	1 (Models WB, WE) 2 (Models WF, WH, WJ, WL, WR)		27817				24735		

## PARTS LIST, continued

Key No.	Part Name	NUMBER REQUIRED		PART NUMBERS				PART NUMBERS		
		Models WB, WE, WF, WH	Models WJ, WL, WR	Model WB	Model WE	Model WF	Model WH	Model WJ	Model WL	Model WR
624-198	Brake Friction Plate – Double (Not Required for Models WB, WE)	1	1	24600				24601		
624-199	Brake Coil	1	1	See Parts List on Page 19				See Parts List on Page 19		
624-200	Gear Housing Gasket	1	1	27747				35707		
624-210	Rotor Assembly (Items 624-108 and 624-112 Included) (For 115-1-60 Units, Item 624-212 Included)	1	1	See Parts List on Page 19				See Parts List on Page 19		
624-211	Stator (Also order 624-113 for Models WB, WE, WF, WH)	1	1	See Parts List on Page 19				See Parts List on Page 19		
624-212	Centrifugal Mechanism and Spacer	1	1	C349				C349		
624-213	Capacitor 115-1-60	1	1	27716				24802		
624-214	Capacitor Mounting Spring and Mounting Screw 115-1-60	1	1	C336				-		
624-215	Cut-out Switch with Attaching Screws 115-1-60	1	1	Order (1) Cut-Out Switch 24675 & (2) Screw 987523				C339 (115-1-60 Units Only)		
624-216	Contacto with Attaching Screw	1	1	Order (1) Contacto 28553, (2) Screw 957854 and (2) Lockwashers 957855				For 115-1-60 Units, Order (1) Contacto 35182, (2) Screw 957854 & (2) Lockwashers 957855. For 230/460-3-60 Units, Order (1) Contacto 24729, (2) Screw 957854 & (2) L.W. 957855.		
624-218	Transformer with Attaching Screws	1	1	C343 (230/460 Units Only)				Order (1) Transformer 24900 & (2) Screw 982683		
624-219	Wire Nuts (Specify Number Required)	-	-	982473 (Small) or 982477 (Large)				982473 (Small) or 982477 (Large)		
624-220	Jumper Set	1	1	For 115-1-60 Units, Order (1 Each) 51847, 24111, 24112 and 24113 Jumpers. For 230/460-3-60 Units, Order (1 Each) 24111 24112, and 24113.				For 115-1-60 Units, Order (1 Each 24111, 24112 and 24113 Jumpers For 230/460-3-60 Units, Order (1 Each 24112, and 24113		
624-221	Power Cord 115-1-60 230/460-3-60	1 1	1 1	24106 24107				24119 24120		
624-230	Control Station and Cable 10 ft. Lift Units 15 ft. Lift Units 20 ft. Lift Units All Other Lifts	1	1	24100 24101 24102 Contact CM				24100 24101 24102 Contact CM		
624-231	Control Cable 10 ft. Lift Units 15 ft. Lift Units 20 ft. Lift Units All Other Lifts	1	1	24103 24104 24105 Contact CM				24103 24104 24105 Contact CM		
624-232	Control Station	1	1	See Figure 16, Page 22				See Figure 16, Page 22		
624-233	Warning Tag	1	-	81704				81704		
624-234	Product Label	1	1	24707				24707		
624-240	Rotor Wave Washer	1	-	27292				-		
624-241	Rotor Bearing Spacer	1	-	27291				-		
624-252	Warning Label (Electrical)	2	2	24842				24842		
624-760	Lower Hook and Block Assembly	1	1	28683	-	28683	-	35651	35651	-
624-763	Lower Hook Body	1	1	45401	-	45401	-	35370	35370	-
624-764	Lower Hook Chain Block Pin	1	1	45943	-	45943	-	35790	35790	-
624-771	Lower Hook with Latch	1	1	28686	-	28686	-	35611	35611	-
624-772	Lower Hook Thrust Bearing	1	1	88485	-	88485	-	88485	88485	-
624-774	Lower Hook Nut Pin	1	1	983772	-	983772	-	983772	983772	-
624-775	Lower Hook Chain Block	1	1	28007	-	28007	-	35026	35026	-
624-776	Lower Hook Nut	1	1	98256	-	98256	-	98256	98256	-
624-777	Lower Hook Block Washer	1	1	945921	-	945921	-	945921	945921	-

## PARTS LIST

### MODELS AND VOLTAGES

Key No.	Part Name	No. Req'd.	WB, WE		WF, WH		WJ		WL		WR	
			115-1-60	230/460	115-1-60	230/460	115-1-60	230/460	115-1-60	230/460	115-1-60	230/460
624-199	Brake Coil	1	51001	51003	51001	51003	-	51002	51001	51002	51001	51002
624-210	Rotor Assembly Includes Items 624-108 and 624-112 115-1-60 Includes 624-212	1	24662	28531	24663	28530	-	36401	24674	36401	24674	36401
624-211	Stator (also order 624-113 for models WB, WE, WF, WH)	1	24782	24781	24783	24780	-	24796	24795	24796	24795	24796

### PACKAGED LUBRICANTS

Used in the Valustar Electric Chain Hoists  
(Refer to page 12 for Lubrication Instructions)

Usage	Type	Quantity	Part No.
Hoist Gears	Grease (Special)	1/2# Can	28605
		1# Can	28616
		4# Can	28617
Splines on end of Drive Shafts	Oil-Graphite Mixture	1 Pint Can	40628
Load Chain	Oil	1 Pint Can	28608
		1 Gal. Can	28619
Lower Hook Thrust Bearing	Grease: Heavy Cup Grease - obtain locally*		

\*These oils are not furnished by CM in packaged quantities.

When ordering lubricants, specify the type of lubricant, part number and packaged quantity required.

### TOUCH-UP PAINTS

Valustar Electric Chain Hoists and Series 635 Low Headroom Trolleys

Name	Color	Quantity*	Size	Part No.
Hoist	Orange	1 case	12-12 oz. Aerosol Cans	84190
Trolley	Black	1 case	12-12 oz. Aerosol Cans	84189

\*Touch-up paints are only available in case quantities.

**NOTE: When painting Hoists or Trolleys, also order warning labels, identification labels, etc. that may be coated during painting.**

### CONTROL STATION

Key No.	Part Name	No. Req'd.	Part No.
624-232*	Control Station Consists of (1) Gasket, (1) Case, (2) Switch, (1) Jumper, (1) Terminal, (1) Terminal Screw, (2) Switch Leaf Spring, (2) Switch Mounting Pin, (2) Pin Retainer Screws and (1) Warning Label.	1	28630
624-252	Warning Label (Electrical)	1	24842
624-301	Control Station Kit Consists of (1) Grommet, (1) Grommet Retainer Ring, (2) Grommet Retainer Ring Attaching Screw, (4) Cover Screw, (1) Strain Cable Attaching Screw and (1) Strain Cable Attaching Screw Washer.	1	28627
624-302	Case	1	28873
624-303	Gasket	1	28876
624-304	Cover Assembly (Decal and Rocker Included)	1	51477
624-306	Control Station Parts Kit Consists of (1) Strain Cable Attaching Screw, (1) Strain Cable Attaching Screw Washer, (2) Switch Mounting Pin, (2) Pin Retainer Screw and (2) Switch Leaf Spring.	1	51481
624-307	Control Station Switch Kit Consists of (2) Switch, (1) Jumper, (1) Terminal and (1) Screw.	1	51472

\*Also order 28627 Control Station Kit.

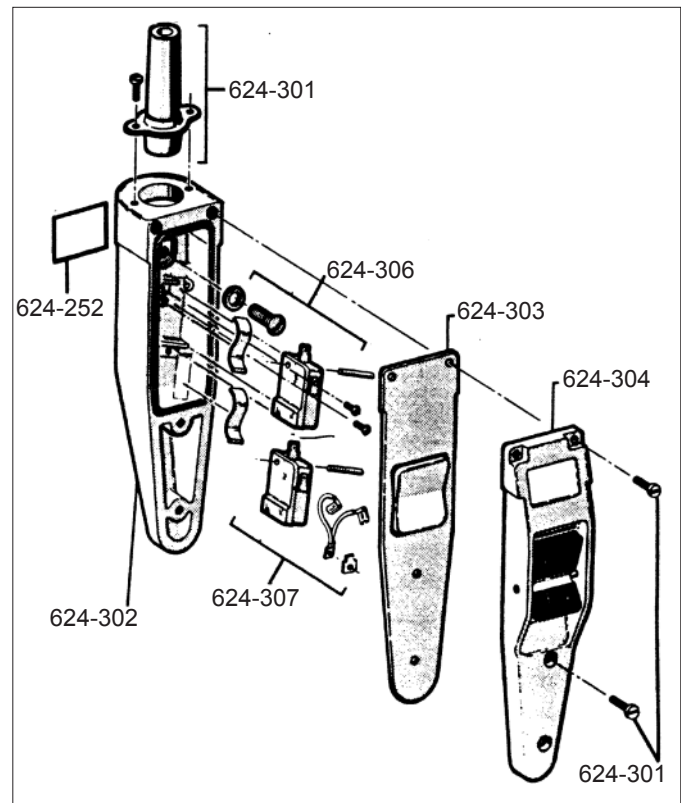


Figure 16. Control Station Exploded View

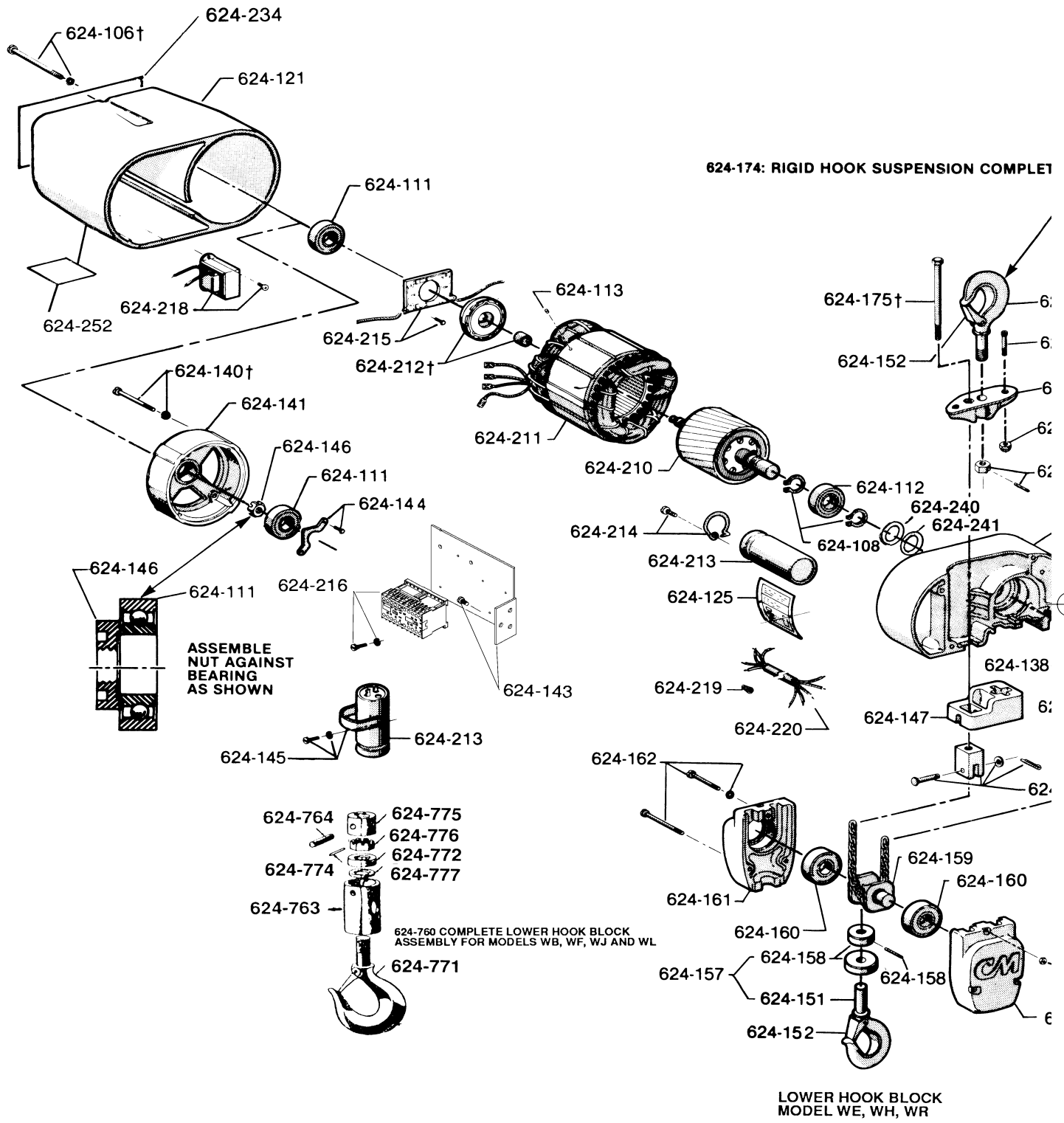


Figure 17. Valustar Electric Chain Hoist Exploded View



## SERIES 635 LOW HEADROOM TROLLEY PARTS LIST

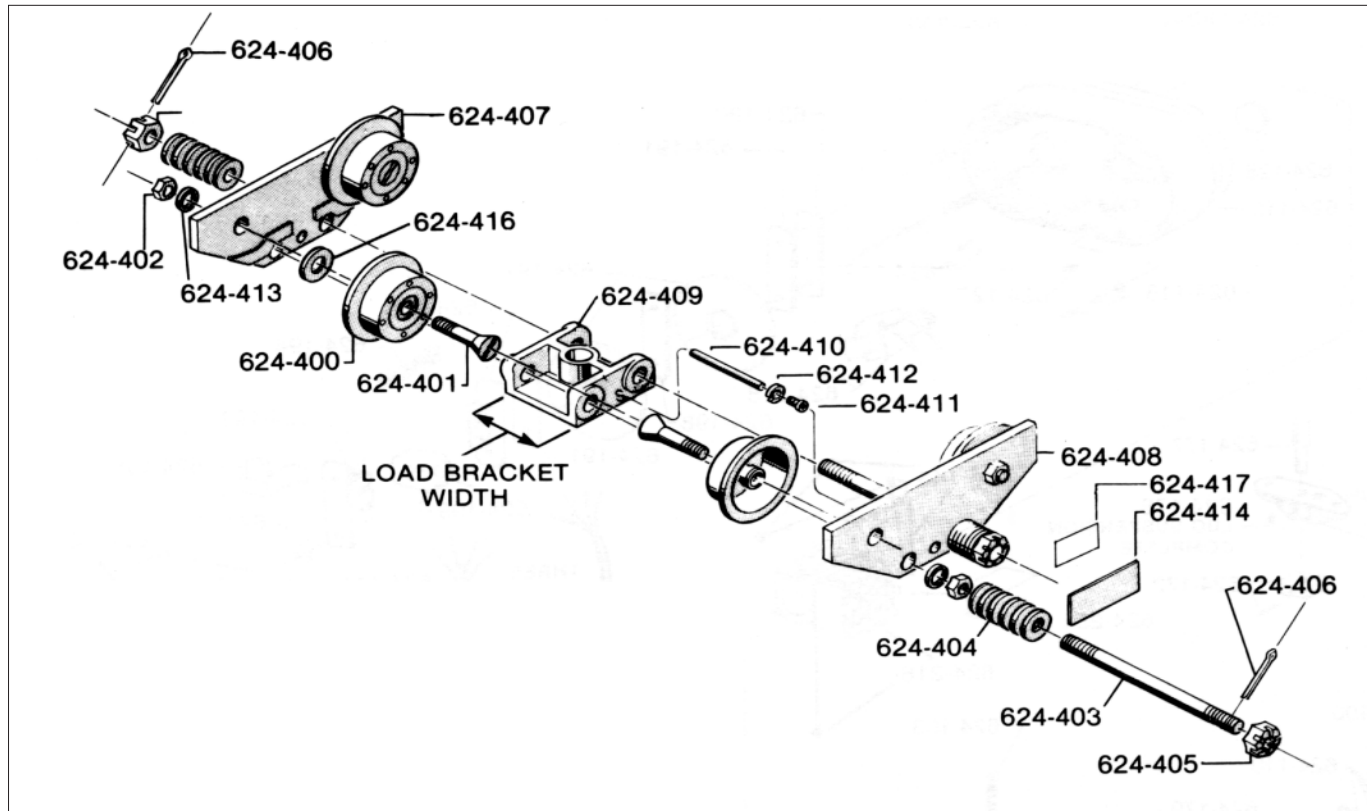


Figure 18. Series 635 Low Headroom Trolley Exploded View

Key No.	Part Name	No. Req'd.		Part No.	
		1-Ton	2-Ton	1-Ton	2-Ton
624-400	Trackwheel	4	4	35774	50762
624-401	Trackwheel Stud	4	4	987790	35838
624-402	Trackwheel Stud Nut	4	4	982520	948804
624-403	Suspension Bolt (Special Alloy Steel Bolt)				
	9-5/32" long*	2	-	35450	-
	10-1/4" long**	2	-	35407	-
	10" long†	-	2	-	35445
	12-1/16" long††	-	2	-	35414
624-404	Trolley Spacer Washers				
	0.165" thick*	40	-	35782	-
	0.125" thick**	38	-	958822	-
	0.165" thick†	-	32	-	35783
	0.125" thick††	-	38	-	988039
624-405	Suspension Bolt Nut	4	4	948803	958818
624-406	Suspension Bolt Nut Cotter Pin	4	4	988343	988368
624-407	Side Frame, Plain Side				
	Without Trolley Guards***	2	2	35640	35654
	Trolley Guards***	2	2	35635	35636
624-408	Side Frame, ID Plate Side				
	Without Trolley Guards***	2	2	35640	35654
	Trolley Guards***	2	2	35635	35636

Key No.	Part Name	No. Req'd.		Part No.	
		1-Ton	2-Ton	1-Ton	2-Ton
624-409	Load Bracket				
	3-7/16" wide*	1	1	35019	-
	5-13/32" wide**	1	1	35024	-
	4-3/16" wide†	1	1	-	35033
	6-11/16" wide††	1	1	-	35043
624-410	Vertical Load Bar Pin (Special Alloy Steel Pin)				
	2-11/16" long*	1	1	35371	-
	2-7/8" long**	1	1	-	35413
	3-3/4" long†	1	1	-	35400
624-411	Vertical Load Bar Pin Screw				
	1/2" long*	1	1	982383	-
	1-1/4" long**	1	1	982386	-
	3/4" long†	1	1	-	982433
	1-1/2" long††	1	1	-	987209
624-412	Vertical Load Bar Pin Screw L.W.	1	1	983548	983547
624-413	Trackwheel Stud Nut L.W.	4	4	987923	987924
624-414	Identification Label	1	1	36916	36917
624-416	Trackwheel Washer	-	1	-	987903
624-417	Warning Label	1	1	936984	936984

\* These items are for the 1-Ton Trolley for operation on 2.66" thru 5.64" flange widths.  
 \*\* These items are for the 1-Ton Trolley for operation on over 5.64" thru 7.00" flange widths.  
 \*\*\* If side frame is equipped with spacer block, contact factory.

† These items are for the 2-Ton Trolley for operation on 3.33" thru 6.00" flange widths.  
 †† These items are for the 2-Ton Trolley for operation on over 6.00" thru 8.25" flange widths.